

---

# Amenities

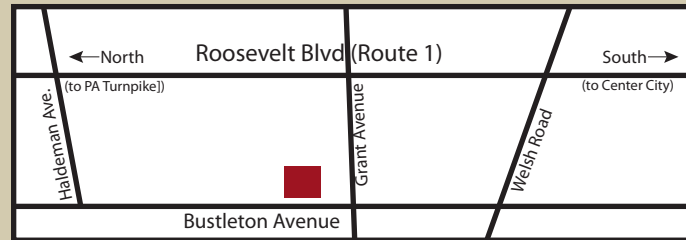
---

- Heat, hot water and cooking gas included
  - Very spacious floor plans
  - Individually controlled heat/ AC
  - Off street parking
  - 24 hour emergency maintenance
  - On site laundry facilities
  - Eat in kitchen
  - Elevator in Building
  - Intercom system
  - Management on premises
  - Cable available
  - Ample closet space
  - Wall to wall carpeting
  - Mini blinds
  - Extra storage available
- 

---

# Directions

---



## From Center City

Roosevelt Blvd (Route 1) to Grant Ave.  
Turn left on Grant Ave. Go two stop lights and turn right on Bustleton ave.  
Complex is on the right hand side.

## From Bucks County

95 South to Woodhaven Road West.  
Woodhaven Rd. West to Route 1 South.  
Follow to Haldeman Ave. and bear right on Haldeman Ave. Continue to the end to Bustleton Ave. Turn left on Bustleton Ave. and continue three blocks.  
Complex is on the left hand side (next to Bustleton Medical Center).

# Chapelcroft Apartments



*A Place  
to Call Home*



MANAGED BY:  
**CONCORDIA**  
PROPERTIES

**9629 Bustleton Avenue  
Philadelphia, PA 19115**

**Phone: 215-464-6101**

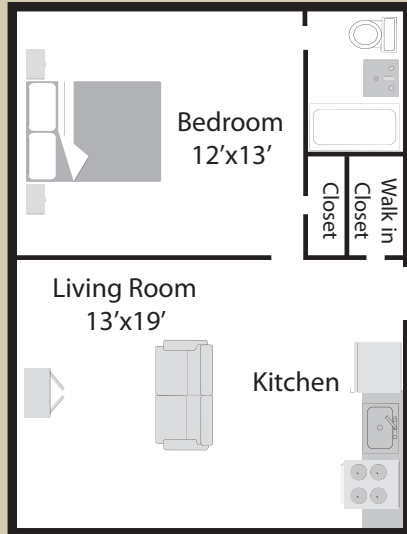
**Fax: 215-464-0536**

**chapelcroft@concordiaproperties.com**

**www.concordiaproperties.com**

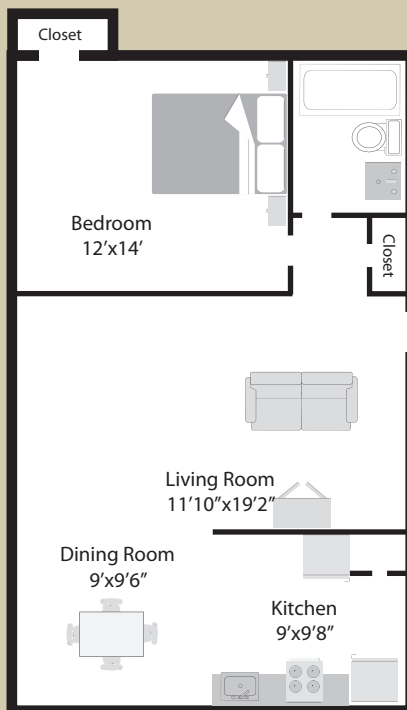
## Junior One Bedroom

520 sq ft



## One Bedroom

730 sq ft



# Chapelcroft Apartments

Studio, 1 & 2  
bedrooms available.

## Apartment Features

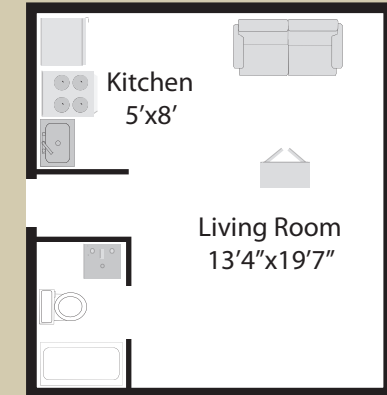
- Minutes to Route 1, I-95, and PA Turnpike
- Public transportation at your door
- Close to Franklin Mills Mall
- 20 minutes to Center City and the Philadelphia Waterfront
- Close to shopping, schools and restaurants



Floorplans not to scale. Details vary from residence to residence and are not necessarily built exactly as indicated above.

## Studio

410 sq ft



## Two Bedroom

930 sq ft

